

# Generic Allogeneic ATMP Clinical Flow Chart

**Creator:** Velindre University NHS Trust  
**Document version number:** V1.4  
**Date written:** November 2020

## End user rights:

This document is shared with permission for re-use to distribute, remix, adapt, and build upon the material in any medium or format for non-commercial purposes only, so long as the attributions listed below are given.

**Attributions:** Velindre University NHS Trust

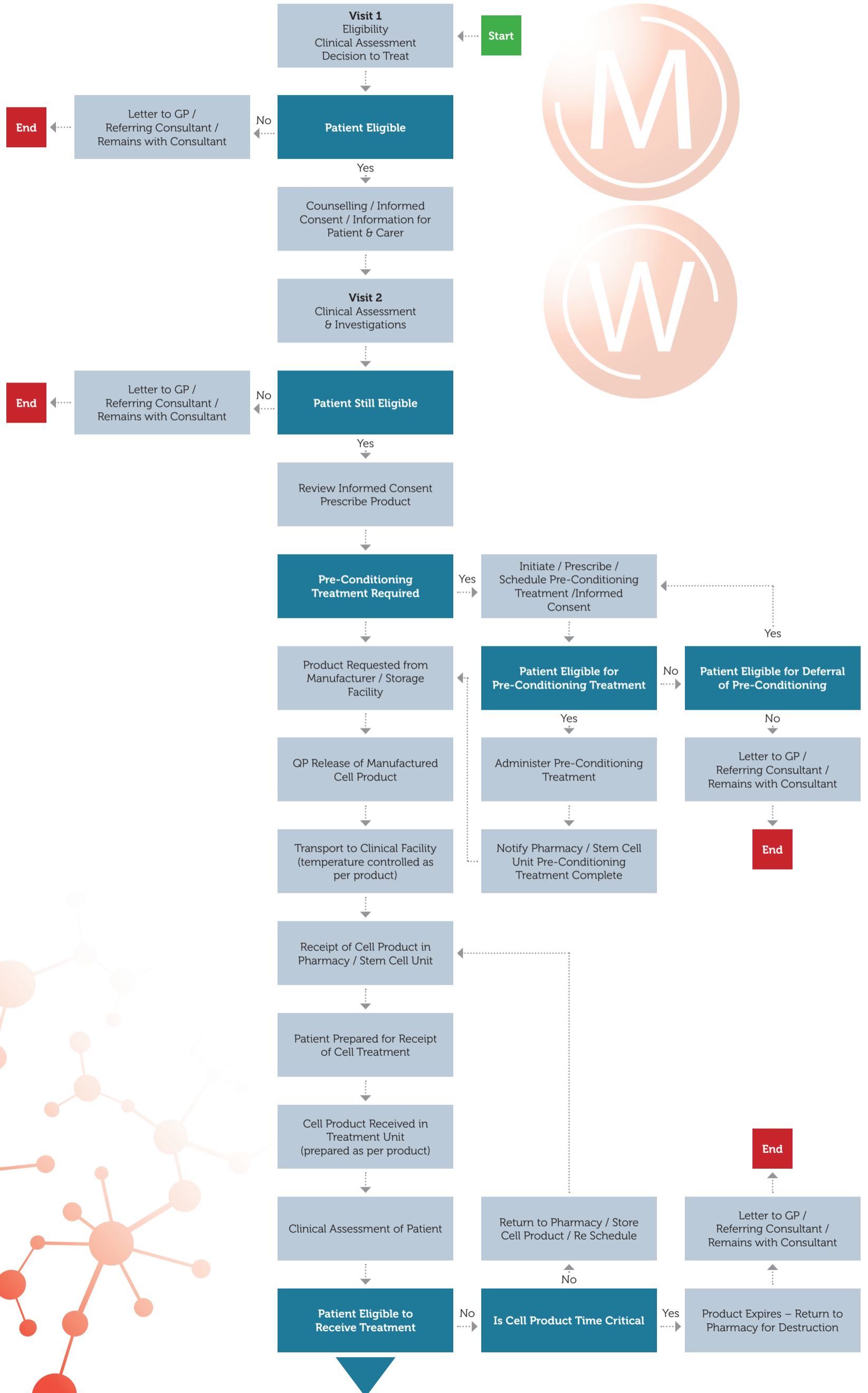
This document is made available under a Creative Commons Attribution - NonCommercial 4.0 International License as described here:  
<https://creativecommons.org/licenses/by-nc/4.0/>

---

The information, materials and any opinions contained in this document are provided for general information and educational purposes only, are not intended to constitute legal or other professional advice and should not be relied on or treated as a substitute for specific advice relevant to particular circumstances. Although we make all reasonable efforts to ensure the information is up to date, we make no representations, warranties or guarantees in that regard. In no event shall the creator(s) be liable for any direct, indirect, special, consequential or other damages that are related to the use or reliance whatsoever in the content of the document or any part thereof.

# Generic Allogeneic ATMP Clinical Flow Chart

Version 1.4 (Page 1)



# Generic Allogeneic ATMP Clinical Flow Chart

Version 1.4 (Page 2)

